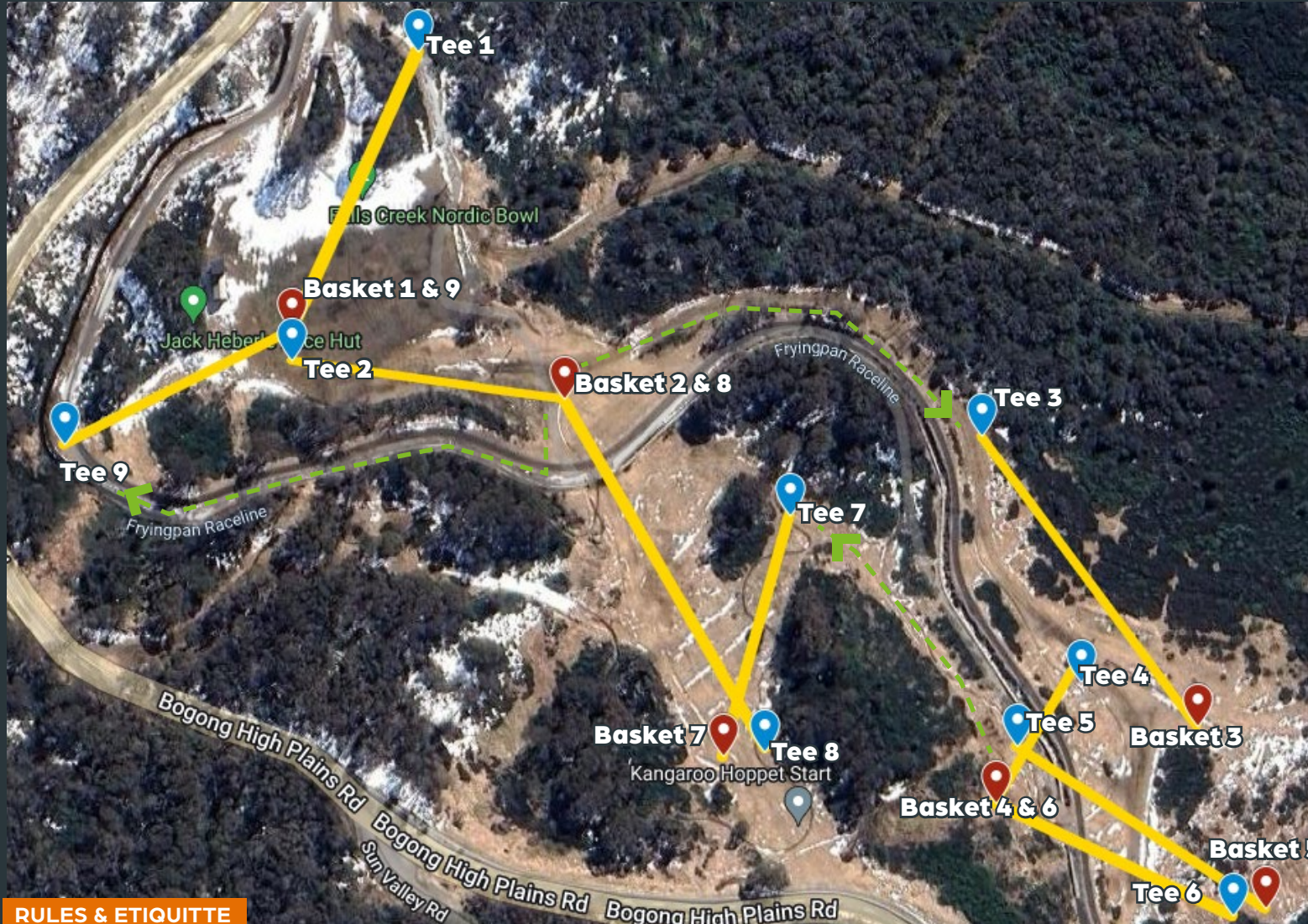


DISC GOLF Map & Scorecard



Players Name				PAR
Hole 1				3
Hole 2				3
Hole 3				3
Hole 4				3
Hole 5				3
Hole 6				3
Hole 7				3
Hole 8				4
Hole 9				3
Total				28

RULES & ETIQUETTE

- Courtesy** Watch out for other users of the area including bikes and walkers. Always give way to other park users and take your litter with you.
- Tee Throws** Each hole begins with a throw from the tee pad.
- Lie** The spot where the disc lands.
- Throwing Order** Lowest score on the previous hole throws first. After the teeing off, the player whose lie is furthest from the basket throws first.
- Fairway Throws** Must be made from the lie. A run-up and follow through is permitted
- Putting** Within 10 metres of the basket, a player may not step past the lie when attempting to throw
- Completion of Hole** The hole is complete when the disc lands in the basket

